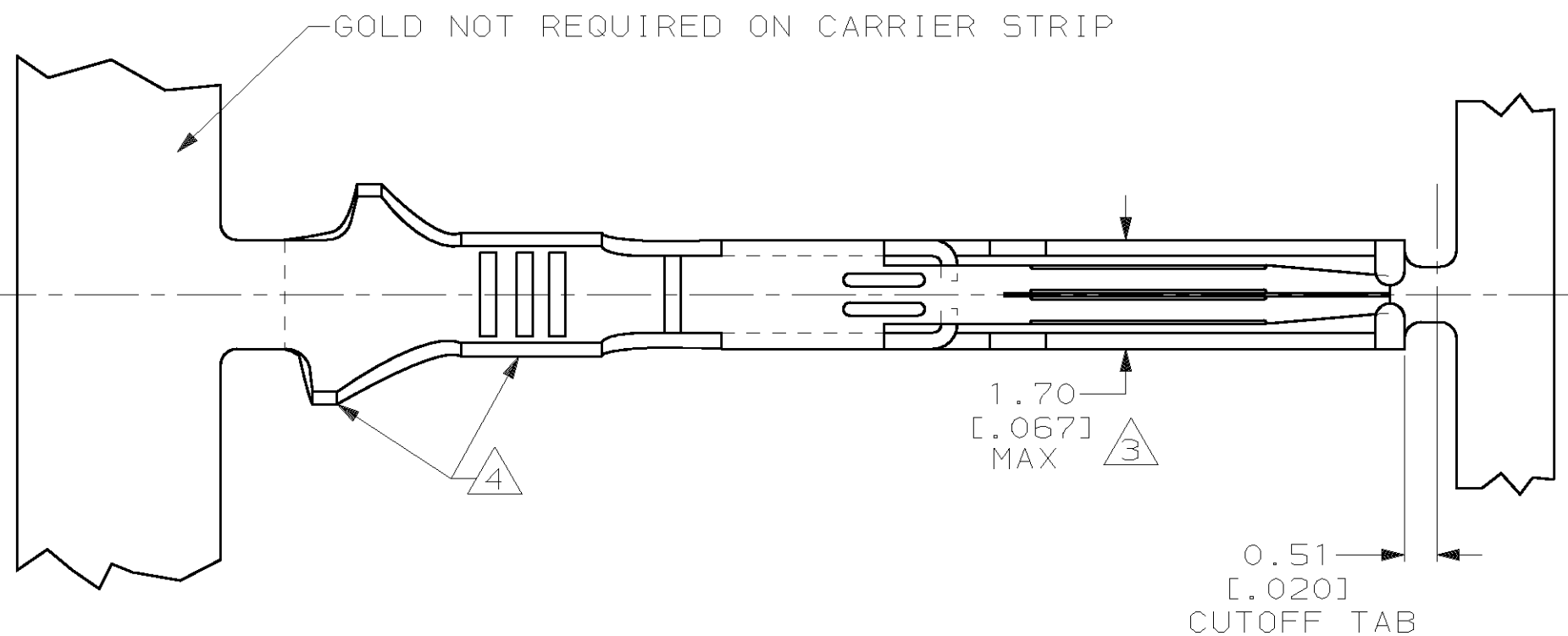
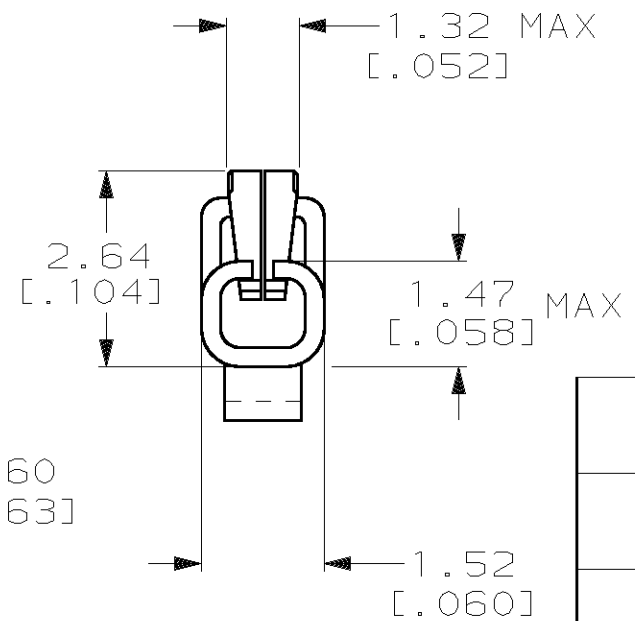
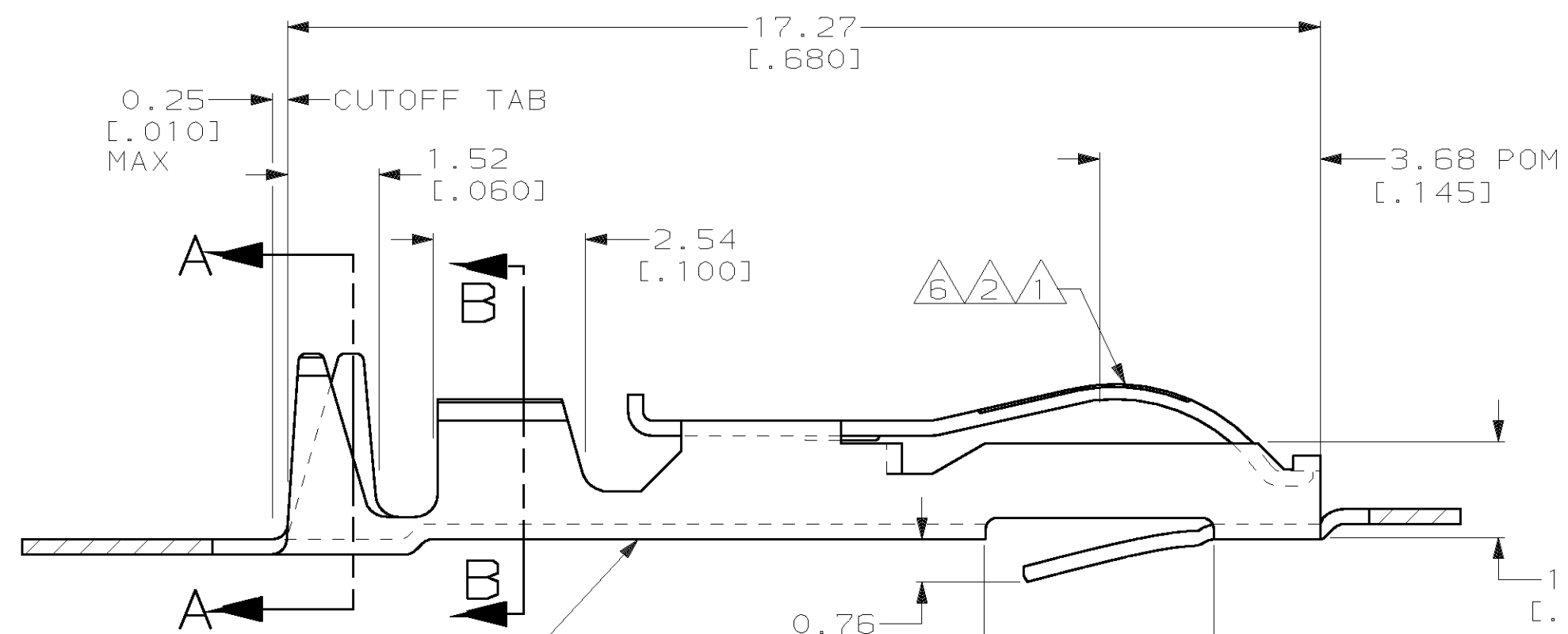


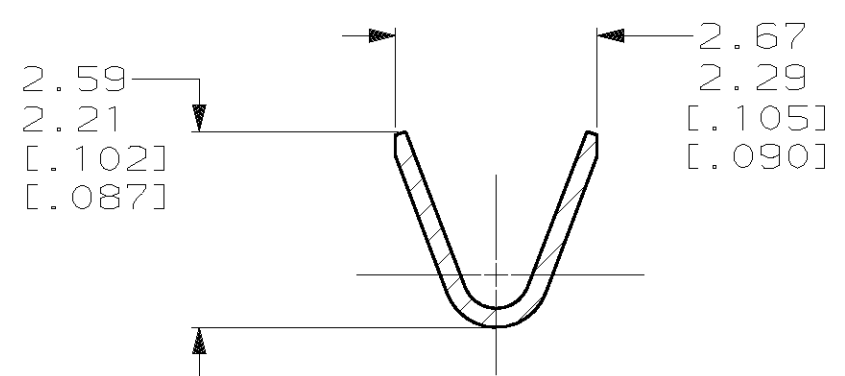
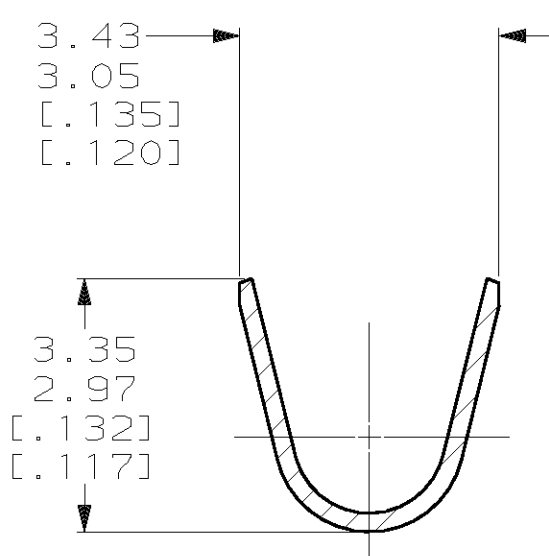
LOC	DIST	P	F	ZONE	LTR	REVISIONS	DATE	APPD
FT	22				Z	REV PER 0G3C-0515-04	05JAN05	JR/MM



- ① .000030 GOLD OVER .000030 NICKEL IN CONTACT AREA.
- ② .000015 GOLD OVER .000030 NICKEL IN CONTACT AREA.
- ③ .067 MAX ALLOWED IN LOCKING POSITION AREA FOR .140 REF LENGTH.
- ④ TIN-LEAD IN CRIMP AREA.
- ⑤ OBSOLETE
- ⑥ .000050 GOLD OVER .000050 NICKEL IN CONTACT AREA. REMAINDER OF CONTACT GOLD FLASH OVER NICKEL.
- ⑦ CRIMP TWIN LEAF CONTACTS WITH 22-18 AWG WIRE RANGE TO BE USED ONLY WITH .125¢ & .156¢ CRIMP TWIN LEAF HOUSINGS.
- ⑧ UNPLATED PARTS IN STRIP FORM REELED ON CORRUGATED REEL FOR SALABLE PART.
- ⑨ TIN IN CRIMP AREA.



COLOR CODED VIOLET FOR WIRE RANGE IDENTIFICATION (LOOSE PIECE ONLY)



5-583649-3	583649-8	①⑨	5-583649-6
5-583649-2	583649-9	②⑨	5-583649-5
1-583649-1	-	⑧	-
OBSOLETE	583649-4	⑥	583649-7
OBSOLETE	583649-3	①④	583649-6
OBSOLETE	583649-2	②④	583649-5
STRIP PART # STD REELING LEFT TO RIGHT	STRIP PART # REELING RIGHT TO LEFT	FINISH	LOOSE PIECE

DO NOT SCALE PRINT. UNLESS SPECIFIED DIMENSIONS IN mm [INCHES] TOLERANCES ON:		DR 8-2-93 A. STAUB BG		AMP AMP Incorporated Harrisburg, PA 17105-3608	
2 PLC DEC ± -	3 PLC DEC ± .005	CHK 2/18/94 H ROSE	APPD 2/18/94 H ROSE	NAME	
ANGLES ± -		MATERIAL PHOS BRONZE	APPD 2/18/94 M THUMMA	CONTACT-TWIN LEAF (CRIMP-SNAP)	
FINISH SEE TABLE		APPLICATION SPEC -	PRODUCT SPEC -	SIZE C	CAGE CODE 00779
		WEIGHT -		DRAWING NO C=583649	
				SCALE 10:1	SHEET 1 OF 1

THIS DRAWING IS A CONTROLLED DOCUMENT FOR AMP INCORPORATED. IT IS SUBJECT TO CHANGE AND THE CONTROLLING ENGINEERING ORGANIZATION SHOULD BE CONTACTED FOR THE LATEST REVISION.